

# Stifterne i Danmark



Afkast af stiftsmidler 2008

# Stifternes beholdningsopgørelse 2008

Stifternes gennemsnitlige beholdninger for 2008 er beregnet som gennemsnit af primo- og ultimobeholdninger.

	Århus	Viborg	Aalborg	København	Roskilde	Lolland-Falster	Fyen	Ribe	Haderslev	Helsingør	I alt
Obligationer	324.624.839	349.758.821	172.412.535	50.368.767	339.660.352	46.374.841	199.490.003	294.961.181	224.198.377	63.129.856	2.064.979.572
Kontanter	29.877.521	1.985.000	121.910.232	3.467.620	11.792.513	4.593.766	18.465.477	138.499.395	41.309.623	5.896.588	377.797.735
Udlån	178.603.302	278.949.709	345.661.650	19.375.656	158.007.588	82.829.830	160.982.962	173.241.933	197.207.686	169.347.082	1.764.207.398
I alt	533.105.662	630.693.530	639.984.417	73.212.043	509.460.453	133.798.437	378.938.442	606.702.509	462.715.686	238.373.526	4.206.984.705

Obligationer/Investeret kapital.

= Regnskabsmæssig nominel beholdning korrigeret for regnskabsmæssig urealiseret kursværdi.

Regnskabsmæssig urealiseret kursgevinst/tab.

= Bogført forskel mellem købsværdi og kurs 100.

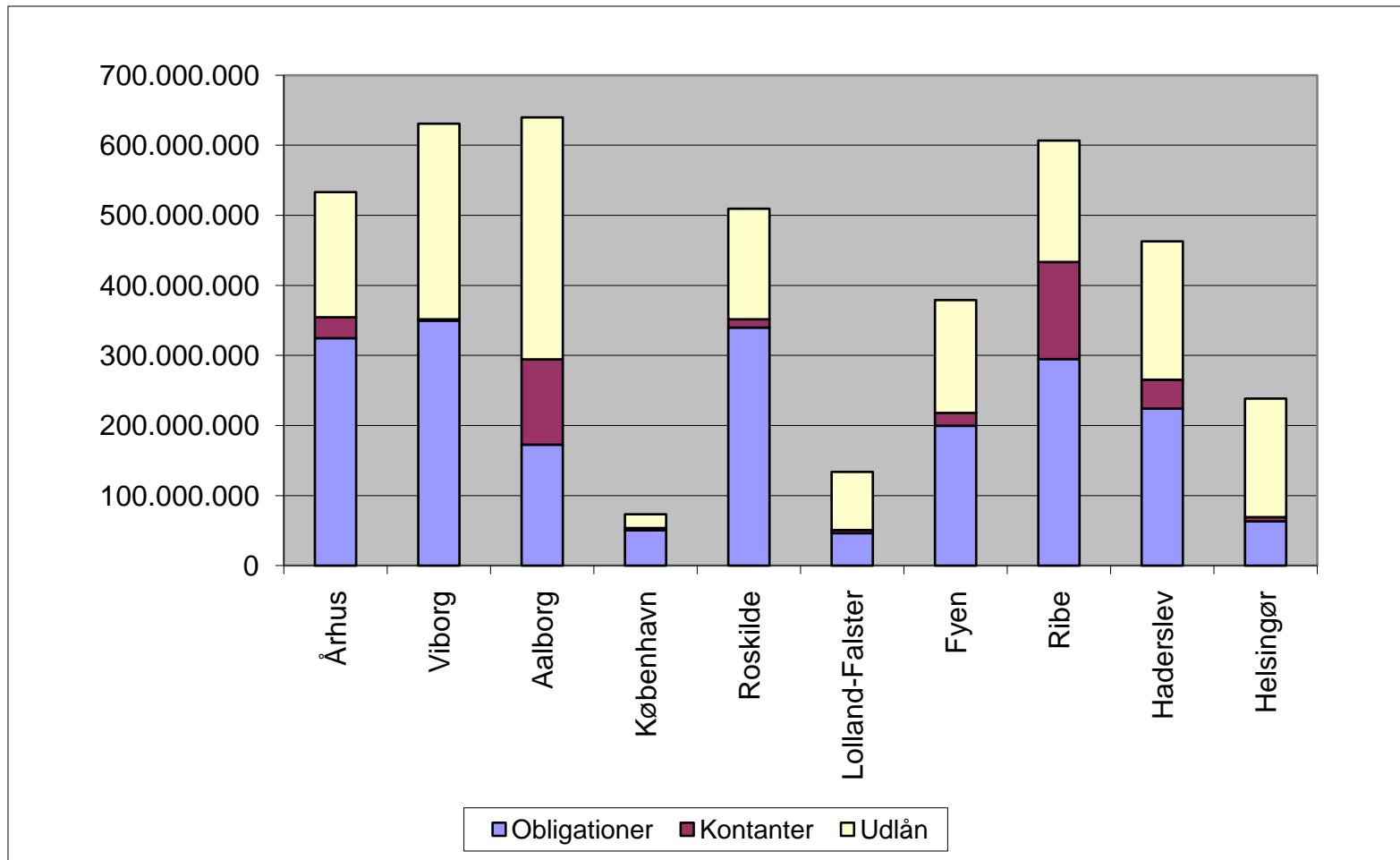
Kontanter.

= Sum af stiftsmidlernes kontanter henholdsvis på aftaleindlån og afregningskonto.

Udlån.

= Sum af udlån til Præsteembeder, Kirker, Fællesfonden m.v.

# Stifternes beholdningsopgørelse 2008

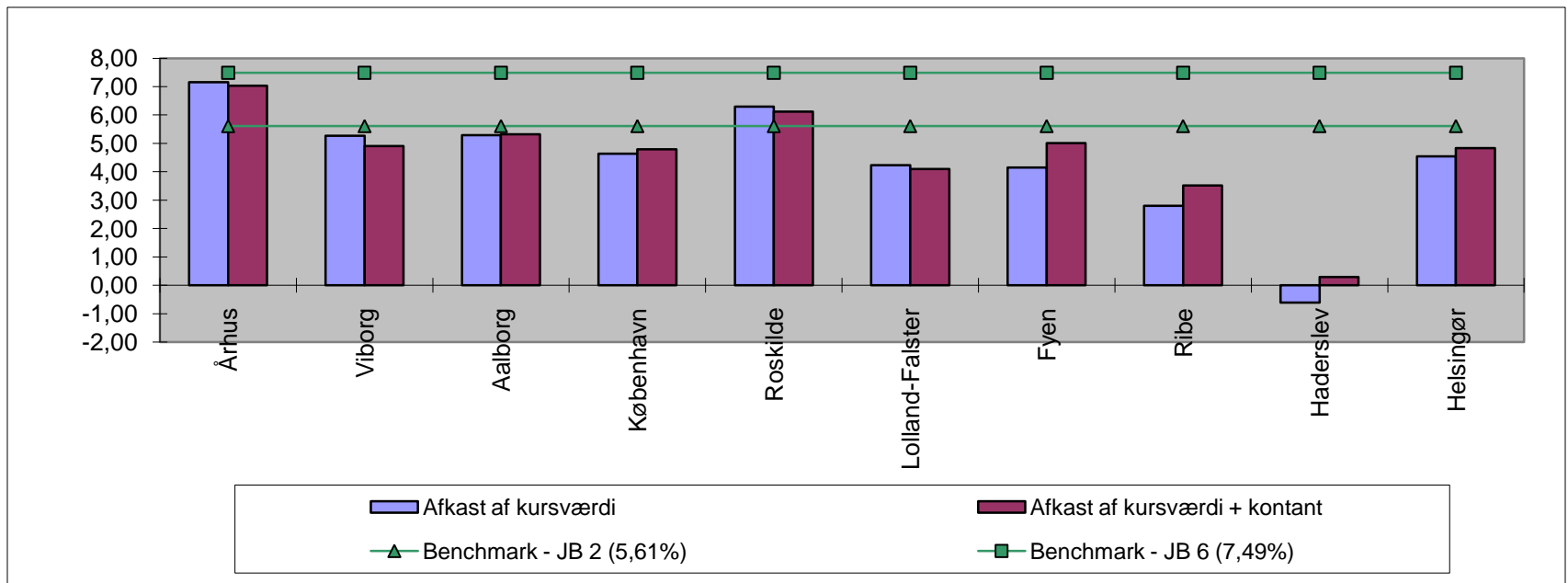


# Afkast 2008 - afgrænsninger

- Afkastet er beregnet kvartalsvis ud fra den gennemsnitlige obligationsbeholdning
- Afkastet er beregnet af henholdsvis den rene obligationsbeholdning samt obligationsbeholdningen inkl. kontanter
- Afkastet er sammenlignet med Benchmark (passivt afkast) opgjort af Jyske Bank med realkredit indeks med en indeksvarighed på henholdsvis 2 og 6 jf. bilag side 9 og 10
- Alle stifter udlåner til 4 % p.a. Den udlånte kapital samt afkastet af denne, er derfor holdt uden for afkastberegningerne.
- Afkastet er således beregnet på beholdninger af obligationer og kontanter. Kontanter omfatter aftaleindlån samt afregningskonti.

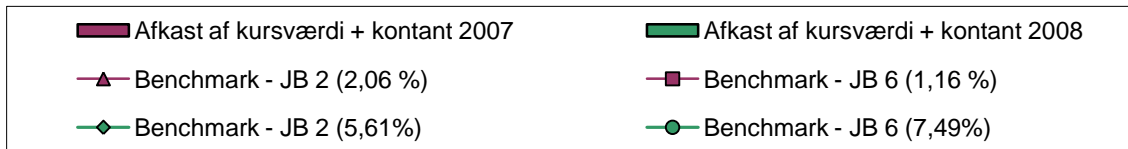
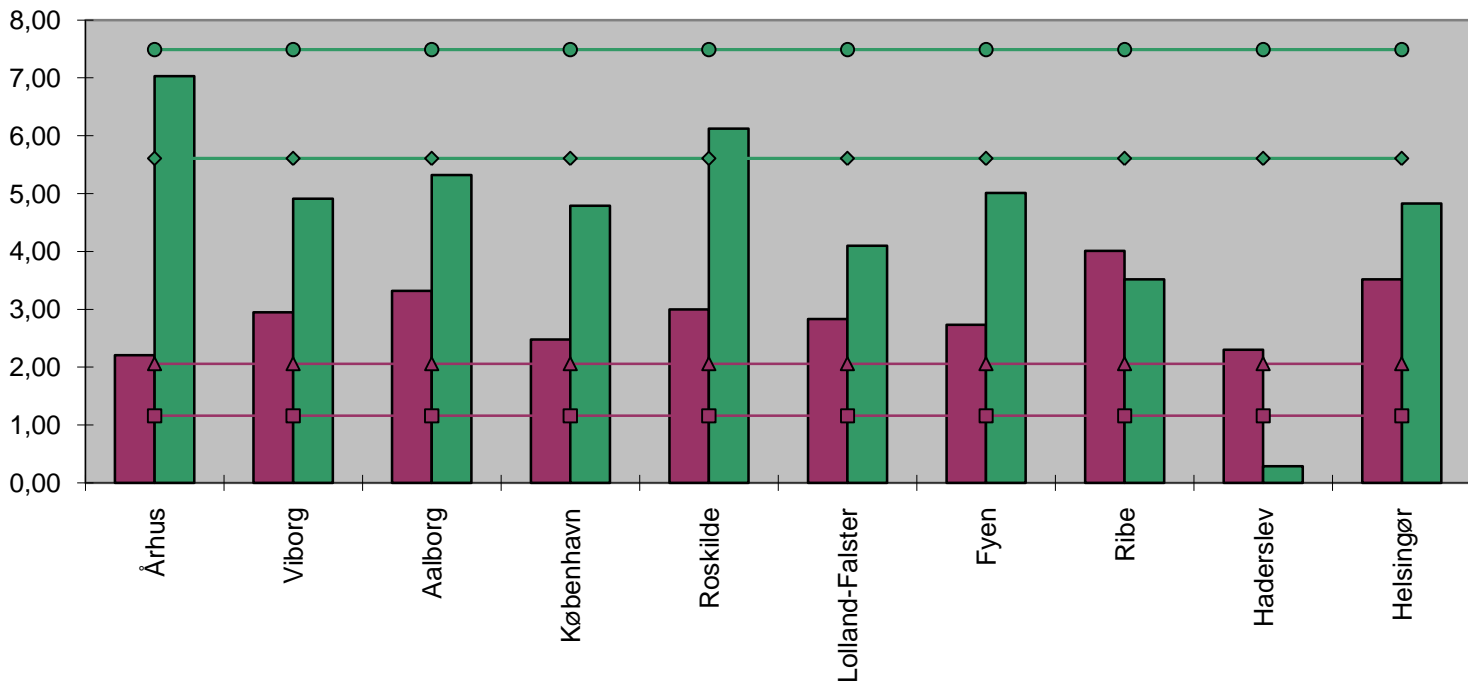
# Afkast af beholdning til kursværdi og samme inkl. kontanter

Afkast i %	Århus	Viborg	Aalborg	København	Roskilde	Lolland-Falster	Fyen	Ribe	Haderslev	Helsingør
Kursværdi	7,16	5,27	5,29	4,64	6,29	4,23	4,15	2,80	-0,61	4,54
Inkl. kontanter	7,03	4,91	5,32	4,79	6,12	4,10	5,01	3,52	0,29	4,83

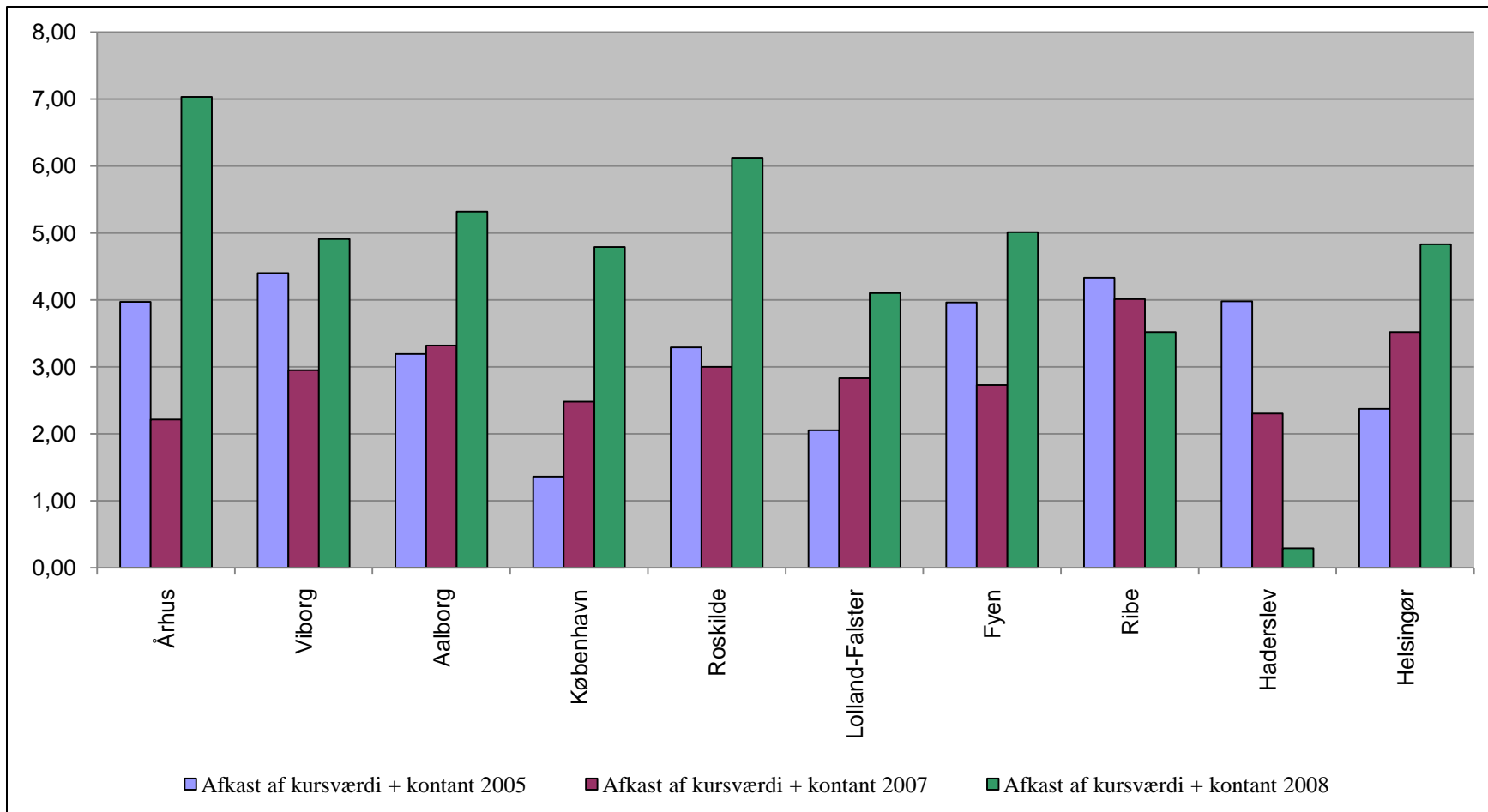


Kursværdi = Obligationsbeholdning til dagskurs ultimo hvert kvartal.

# Afkast udvikling 2007-2008



# Afkast udvikling 2005, 2007 - 2008



# Afkast udvikling 2005 - 2008

- Afkastet for 2008 er sammenlignet med afkastet for henholdsvis 2005 og 2007, idet der i 2006 ikke blev foretaget nogen benchmarking grundet ændring i Fællesfondens bogføring fra SØS til Navision stat.
- Afkastet er beregnet som pct. af den kursregulerede obligationsbeholdning inkl. kontantbeholdning

# Jyske Bank realkredit indeks – real 2

Børsdag	Indeks	Børsdag	Indeks	Børsdag	Indeks	Børsdag	Indeks	Børsdag	Indeks
02-01-08	100	12-03-08	101,922	29-05-08	101,563	08-08-08	102,375	17-10-08	101,456
03-01-08	100,009	13-03-08	102,041	30-05-08	101,743	11-08-08	102,445	20-10-08	101,504
04-01-08	100,852	14-03-08	102,083	02-06-08	101,719	12-08-08	102,884	21-10-08	100,6254
07-01-08	100,965	17-03-08	102,307	03-06-08	101,656	13-08-08	103,168	22-10-08	102,3674
08-01-08	100,974	18-03-08	101,973	04-06-08	101,522	14-08-08	103,264	23-10-08	102,4515
09-01-08	100,96	19-03-08	102,09	06-06-08	100,864	15-08-08	103,457	24-10-08	101,2797
10-01-08	100,969	25-03-08	101,969	09-06-08	100,707	18-08-08	103,582	27-10-08	101,3946
11-01-08	101,095	26-03-08	101,775	10-06-08	101,208	19-08-08	103,62	28-10-08	100,6531
14-01-08	101,14	27-03-08	101,837	11-06-08	100,787	20-08-08	103,423	29-10-08	101,307
15-01-08	101,321	28-03-08	102,016	12-06-08	100,031	21-08-08	103,476	30-10-08	101,8905
16-01-08	101,347	31-03-08	102,008	13-06-08	100,137	22-08-08	103,346	31-10-08	102,593
17-01-08	101,799	01-04-08	102,228	16-06-08	100,331	25-08-08	103,333	03-11-08	103,0501
18-01-08	101,651	02-04-08	102,254	17-06-08	100,396	26-08-08	103,45	04-11-08	102,8877
21-01-08	101,757	03-04-08	102,263	18-06-08	100,682	27-08-08	103,511	05-11-08	102,8946
22-01-08	101,668	04-04-08	102,271	19-06-08	100,215	28-08-08	102,946	06-11-08	103,2135
23-01-08	101,694	07-04-08	102,374	20-06-08	100,111	29-08-08	103,1	07-11-08	102,439
24-01-08	102,016	08-04-08	102,537	23-06-08	100,599	01-09-08	103,12	10-11-08	103,5113
25-01-08	102,025	09-04-08	102,563	24-06-08	100,231	02-09-08	102,929	11-11-08	103,9195
28-01-08	101,877	10-04-08	102,572	25-06-08	100,366	03-09-08	103,278	12-11-08	104,073
29-01-08	101,837	11-04-08	102,581	26-06-08	100,641	04-09-08	103,016	13-11-08	103,9828
30-01-08	101,863	14-04-08	102,589	27-06-08	100,831	05-09-08	103,207	14-11-08	104,136
31-01-08	101,872	15-04-08	102,481	30-06-08	100,582	08-09-08	103,186	17-11-08	104,2668
01-02-08	101,862	16-04-08	102,49	01-07-08	100,77	09-09-08	103,066	18-11-08	103,7687
04-02-08	101,951	17-04-08	102,498	02-07-08	100,682	10-09-08	103,035	19-11-08	104,1187
05-02-08	102,095	21-04-08	101,559	03-07-08	100,688	11-09-08	102,999	20-11-08	104,3305
06-02-08	102,208	22-04-08	101,567	04-07-08	100,878	12-09-08	102,776	21-11-08	104,1956
07-02-08	102,161	23-04-08	101,593	07-07-08	101,369	15-09-08	102,555	24-11-08	103,8735
08-02-08	102,178	24-04-08	102,234	08-07-08	101,562	16-09-08	102,451	25-11-08	103,896
11-02-08	102,194	25-04-08	102,032	09-07-08	101,606	17-09-08	102,232	26-11-08	103,6614
12-02-08	102,211	28-04-08	102,05	10-07-08	101,629	18-09-08	101,275	27-11-08	103,8743
13-02-08	102,085	29-04-08	102,326	11-07-08	101,51	19-09-08	101,256	28-11-08	103,8117
14-02-08	101,876	30-04-08	102,349	14-07-08	101,452	22-09-08	101,358	01-12-08	103,8147
15-02-08	102,093	02-05-08	102,357	15-07-08	102,048	23-09-08	101,438	02-12-08	103,9468
18-02-08	102,21	05-05-08	102,057	16-07-08	101,726	24-09-08	101,575	03-12-08	104,1077
19-02-08	101,999	06-05-08	102,212	17-07-08	101,628	25-09-08	101,692	04-12-08	104,4296
20-02-08	101,979	07-05-08	102,388	18-07-08	101,635	26-09-08	101,827	05-12-08	104,5202
21-02-08	101,995	08-05-08	102,633	21-07-08	101,631	29-09-08	101,871	08-12-08	104,213
22-02-08	102,351	09-05-08	102,543	22-07-08	101,496	30-09-08	101,447	09-12-08	104,0679
25-02-08	102,031	13-05-08	102,515	23-07-08	101,322	01-10-08	101,526	10-12-08	103,8913
26-02-08	101,844	14-05-08	102,4	24-07-08	101,322	02-10-08	101,815	11-12-08	103,8814
27-02-08	101,894	15-05-08	102,368	25-07-08	101,629	03-10-08	101,955	12-12-08	104,1331
28-02-08	102,189	16-05-08	102,038	28-07-08	101,641	06-10-08	102,179	15-12-08	104,1196
29-02-08	102,277	19-05-08	102,232	29-07-08	101,712	07-10-08	102,306	16-12-08	104,2681
03-03-08	102,343	20-05-08	102,166	30-07-08	101,768	08-10-08	101,674	17-12-08	104,7823
04-03-08	102,31	21-05-08	102,111	31-07-08	101,641	09-10-08	101,262	18-12-08	104,8147
05-03-08	102,184	22-05-08	102,358	01-08-08	101,881	10-10-08	101,489	19-12-08	105,0395
06-03-08	102,076	23-05-08	101,947	04-08-08	101,932	13-10-08	101,254	22-12-08	105,1274
07-03-08	101,918	26-05-08	101,7	05-08-08	101,973	14-10-08	101,382	23-12-08	105,3431
10-03-08	101,961	27-05-08	101,626	06-08-08	102,163	15-10-08	101,529	29-12-08	105,5223
11-03-08	101,872	28-05-08	101,698	07-08-08	102,06	16-10-08	101,626	30-12-08	<b>105,6062</b>

# Jyske Bank realkredit indeks – real 6

Børsdag	Indeks	Børsdag	Indeks	Børsdag	Indeks	Børsdag	Indeks	Børsdag	Indeks
02-01-08	100	12-03-08	102,191	29-05-08	100,039	08-08-08	101,348	17-10-08	97,09918
03-01-08	100,607	13-03-08	102,23	30-05-08	100,084	11-08-08	101,466	20-10-08	96,94118
04-01-08	100,702	14-03-08	102,225	02-06-08	100,382	12-08-08	101,924	21-10-08	97,4258
07-01-08	100,776	17-03-08	102,453	03-06-08	100,359	13-08-08	102,249	22-10-08	98,28698
08-01-08	100,753	18-03-08	102,341	04-06-08	100,349	14-08-08	102,41	23-10-08	98,32055
09-01-08	101,112	19-03-08	102,284	06-06-08	99,77	15-08-08	102,533	24-10-08	96,90313
10-01-08	101,16	25-03-08	102,224	09-06-08	99,6552	18-08-08	102,804	27-10-08	96,41072
11-01-08	101,105	26-03-08	102,113	10-06-08	98,7807	19-08-08	102,98	28-10-08	96,22432
14-01-08	101,324	27-03-08	101,941	11-06-08	98,5174	20-08-08	102,877	29-10-08	97,09147
15-01-08	101,454	28-03-08	101,945	12-06-08	98,1027	21-08-08	102,943	30-10-08	98,04577
16-01-08	101,784	31-03-08	102,007	13-06-08	97,9116	22-08-08	102,556	31-10-08	100,2013
17-01-08	101,933	01-04-08	101,945	16-06-08	97,8716	25-08-08	102,606	03-11-08	100,6904
18-01-08	102,122	02-04-08	101,961	17-06-08	97,8907	26-08-08	102,88	04-11-08	101,0897
21-01-08	102,361	03-04-08	102,006	18-06-08	98,1197	27-08-08	102,639	05-11-08	101,121
22-01-08	102,451	04-04-08	102,048	19-06-08	98,169	28-08-08	102,1	06-11-08	101,1357
23-01-08	102,573	07-04-08	102,117	20-06-08	98,2615	29-08-08	102,351	07-11-08	101,3099
24-01-08	102,265	08-04-08	102,167	23-06-08	98,4584	01-09-08	102,465	10-11-08	101,8982
25-01-08	102,078	09-04-08	102,259	24-06-08	98,1744	02-09-08	101,957	11-11-08	102,1165
28-01-08	102,337	10-04-08	102,411	25-06-08	97,9511	03-09-08	102,438	12-11-08	102,4707
29-01-08	102,212	11-04-08	102,334	26-06-08	98,3316	04-09-08	101,924	13-11-08	102,7562
30-01-08	102,149	14-04-08	102,537	27-06-08	98,6812	05-09-08	102,429	14-11-08	102,8041
31-01-08	102,38	15-04-08	102,618	30-06-08	98,3663	08-09-08	102,156	17-11-08	103,2059
01-02-08	102,599	16-04-08	102,388	01-07-08	98,5783	09-09-08	102,107	18-11-08	103,2367
04-02-08	102,673	17-04-08	101,835	02-07-08	98,3537	10-09-08	101,925	19-11-08	103,2043
05-02-08	102,89	21-04-08	101,647	03-07-08	98,4015	11-09-08	101,724	20-11-08	103,1126
06-02-08	103,137	22-04-08	101,458	04-07-08	99,03	12-09-08	101,306	21-11-08	103,2261
07-02-08	103,194	23-04-08	101,503	07-07-08	99,4444	15-09-08	101,065	24-11-08	103,0392
08-02-08	103,244	24-04-08	101,493	08-07-08	99,6002	16-09-08	100,796	25-11-08	102,83
11-02-08	103,23	25-04-08	101,122	09-07-08	99,7146	17-09-08	100,559	26-11-08	102,908
12-02-08	103,229	28-04-08	101,187	10-07-08	99,8864	18-09-08	99,1918	27-11-08	102,9357
13-02-08	102,913	29-04-08	101,282	11-07-08	99,7614	19-09-08	99,0757	28-11-08	103,0317
14-02-08	102,81	30-04-08	101,453	14-07-08	99,9807	22-09-08	99,0836	01-12-08	103,0947
15-02-08	102,734	02-05-08	101,492	15-07-08	100,314	23-09-08	99,0858	02-12-08	103,391
18-02-08	102,815	05-05-08	101,469	16-07-08	100,213	24-09-08	99,2068	03-12-08	103,6152
19-02-08	102,643	06-05-08	101,637	17-07-08	100,023	25-09-08	99,4066	04-12-08	104,7406
20-02-08	102,672	07-05-08	101,76	18-07-08	99,9971	26-09-08	99,5595	05-12-08	104,9271
21-02-08	102,61	08-05-08	101,894	21-07-08	99,5166	29-09-08	99,5538	08-12-08	104,475
22-02-08	102,796	09-05-08	102,272	22-07-08	99,4692	30-09-08	99,1395	09-12-08	104,1524
25-02-08	102,61	13-05-08	102,317	23-07-08	99,384	01-10-08	99,3132	10-12-08	103,9177
26-02-08	102,456	14-05-08	101,722	24-07-08	99,4759	02-10-08	99,752	11-12-08	103,835
27-02-08	102,484	15-05-08	101,331	25-07-08	99,847	03-10-08	100,112	12-12-08	104,3152
28-02-08	102,242	16-05-08	101,31	28-07-08	99,5667	06-10-08	100,467	15-12-08	104,1352
29-02-08	102,635	19-05-08	101,483	29-07-08	99,9606	07-10-08	100,361	16-12-08	104,3947
03-03-08	102,913	20-05-08	101,32	30-07-08	100,124	08-10-08	98,5911	17-12-08	105,1622
04-03-08	102,787	21-05-08	101,205	31-07-08	100,328	09-10-08	97,9135	18-12-08	105,2465
05-03-08	102,584	22-05-08	100,926	01-08-08	100,613	10-10-08	97,9602	19-12-08	105,7166
06-03-08	102,235	23-05-08	100,886	04-08-08	100,711	13-10-08	97,0116	22-12-08	106,035
07-03-08	101,903	26-05-08	100,527	05-08-08	100,842	14-10-08	97,0277	23-12-08	106,7549
10-03-08	101,85	27-05-08	100,437	06-08-08	101,065	15-10-08	97,1885	29-12-08	107,2605
11-03-08	102,018	28-05-08	100,355	07-08-08	101,169	16-10-08	97,0456	30-12-08	<b>107,4915</b>